

FreightSeal User Guide

Automatic lock & seal mode



Call us on: +44 (0)161 429 1580 Visit us at: maplefleetservices.co.uk

FreightSeal User Guide Automatic Locking & Sealing Mode

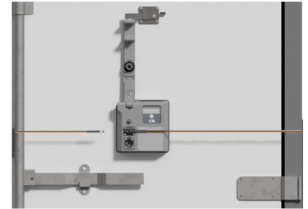


WARNING: Do not attempt to drive the vehicle with the FreightSeal handle stowed in the raised position - it must be secured in the closed position to prevent any damage.

Securing the Load Area

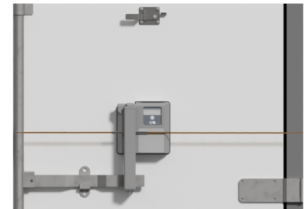
1.

Close the vehicle door and secure the door handle as normal. Thread the sealing cable through the door latch and place the eye of each end of the sealing cable onto the corresponding pin.



2.

Release the latch holding the FreightSeal handle, then lower into the closed position, ensuring that the locking mechanism has fully engaged – The system will automatically lock and a new 5-digit seal number will appear on the display for a few seconds, confirming the unit is secured. The seal number can be displayed at any time by pressing the white wake-up button.

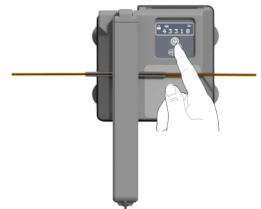


NB: If a seal number is not displayed, ensure that the locking mechanism has fully engaged and the FreightSeal handle cannot be raised.

Accessing the Load Area

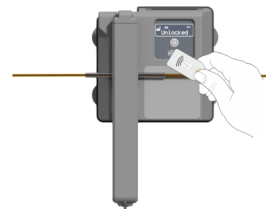
3.

On arrival at the vehicle's destination, press the white action button to confirm the seal number remains intact (and corresponds to vehicle manifest if applicable).



4.

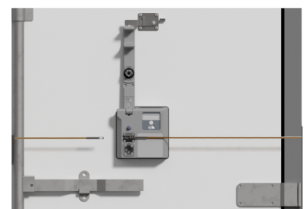
To unlock FreightSeal, press the white action button and present a valid transponder fob to the antenna, the message 'UNLOCKED' will flash up on the display.



5.

Immediately raise the FreightSeal handle to the open position, securely latching it into position - then remove the sealing cable, enabling entry to the cargo area.

NB: If the FreightSeal handle is not raised to the open position within 5 seconds, the locking mechanism will re-engage with a new seal number being generated.



FreightSeal User Guide Challenge Response Access



WARNING: Do not attempt to drive the vehicle with the FreightSeal handle stowed in the raised position - it must be secured in the closed position to prevent any damage.

Accessing the Load Area - Using an Access Code

1.

Press the white 'action button' on the control unit to reveal the seal number, then contact your fleet administrator, quoting the seal number to request an access code.

If you are a registered user visit www.integritas-secure.net and login using your user credentials.



2.

To enter the unlock code into the vehicle mounted unit, press and hold the white 'action button,' until a cursor is displayed.



3.

Press the white 'action button' as many times as required to enter the first digit (i.e. press three times to enter number 3, or five times for number 5).



4.

Wait until the cursor moves to the next position and repeat stage 4 until all five digits have been entered. If a correct code is entered, the message 'Unlocked' will be displayed.

The lock will now retract and you can open the shutter door.



5.

Immediately raise the FreightSeal handle to the open position, securely latching it into position - then remove the sealing cable, enabling entry to the cargo area.

NB: If the FreightSeal handle is not raised to the open position within 5 seconds, the locking mechanism will re-engage with a new seal number being generated.

