

# Integritas User Guide

Automatic locking & seal mode

WARNING USE HANDLES  
WHEN CLOSING  
SHUTTER



Call us on: +44 (0)161 429 1580 Visit us at: [maplefleetservices.co.uk](http://maplefleetservices.co.uk)

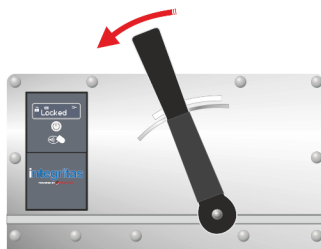
# Integritas User Guide Automatic Locking & Sealing Mode

This vehicle is fitted with the Integritas security lock. The following user guide, details how to use the system with the automatic setting lock.

## To Lock & Seal the Shutter Door

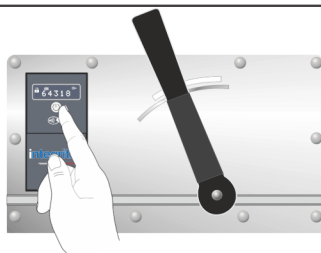
1.

Close the vehicle door and secure the door handle as normal, the unit will automatically lock and seal.



2.

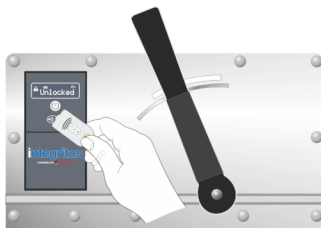
To view the seal number, press the white 'activation' button once.



## To Unlock & Unseal the Shutter Door

3.

Press the white 'activation' button to wake-up the unit, then present a valid transponder to the antenna. The message 'unlocked' will be displayed.



4.

Move the door handle to the unlock position and open the shutter as normal (NB: if you do not open the doors, the unit will re-lock after 30 seconds)

