

BDI Manual Lock & Challenge Response User Guide

This vehicle is fitted with Barndoor Integratas. The following user guide, details how to operate the system with challenge response (access codes) and a manual setting lock.

Securing the Load Area With a Locking Code

1.

Close the vehicle door and secure the door handle as normal. Press and hold the white 'action' button until the locking prompt is displayed (the format is L#). With the locking prompt still displayed, release the button and a cursor will appear.



2.

With the cursor displayed, press the 'action' button as many times as required to enter the single digit locking number (i.e. Press four times to enter the number 4).



3.

With the correct number entered the unit will automatically lock and a new seal number will be generated



4.

To view the seal number, simply press the 'action' button at any time.



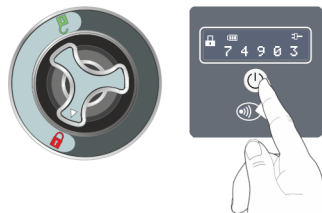
BDI Manual Lock & Challenge Response User Guide

Accessing the Load Area

1.

Press the white 'action button' to reveal the seal number, then contact your fleet administrator, quoting the seal number to request an access code.

If you are a registered user visit the Maple web portal and login using your user credentials.



2.

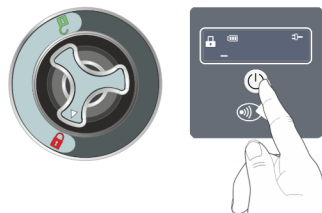
To obtain an access code, once logged into the web portal, click 'Access Code' from the homepage. Select the vehicle from the 'Units' list, enter the current seal number displayed on the vehicle mounted control unit, add any notes, then click 'Get Code.' Your unlock code will then be displayed.



3.

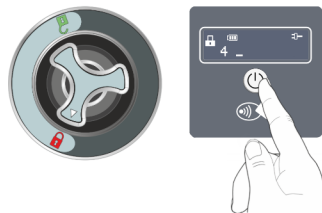
To enter the unlock code, press and hold the white 'action' button until a cursor is displayed.

NB: To generate a valid access code the correct unit must be selected on the web portal and the current seal number must be entered. Unlock codes remain valid for 24 hours.



4.

With the cursor displayed, press the white 'action button' as many times as required to enter the first digit (i.e. press four times to enter the first digit 4, or five times for number 5).



5.

Wait until the cursor moves to the next position and repeat stage 4 until all five digits have been entered. If a correct code is entered a confirmation message will be displayed and the unit will unlock.

With the unit unlocked, turn the handle to the unlock position and open the door.

