

BDI User Guide

EC4 Manual lock & seal mode



Call us on: +44 (0)161 429 1580 Visit us at: maplefleetservices.co.uk

BDI Manual Lock User Guide

This vehicle is fitted with Barndoor Integratas. The following user guide, details how to use the system with a manual setting lock.

To Lock & Seal the Cargo Doors

1.

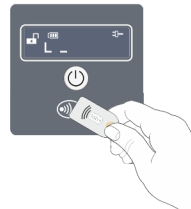
Close the vehicle door and secure the door handle as normal. Press and hold the white 'activation' button until the locking prompt is displayed (the format is L#). With the locking prompt still displayed, release the button and a cursor will appear.



2.

With the cursor displayed, present a valid transponder to the antenna - The lock will engage.

To view the seal number, press the white 'activation' button once.



To Unlock & Unseal the Cargo Doors

3.

Press the white 'activation' button to wake-up the unit, then present a valid transponder to the antenna. The message 'unlocked' will be shown on the display.



4.

Turn the handle to the unlock position and open the door as normal.

